

Northwest Woodworkers Association

THE SAWDUST NEWS



March 2016

<http://www.nwoodworkers.org>

An association for woodworkers of all skill levels to share their common interest

The Next Meeting

Date: **Thursday, April 28, 2016** at 6:30 PM

Location: **Woodcraft Supply**

5963 Corson S.

Seattle, WA 98108

Program Highlight: **Challenged by a 2 x 4**

Put on your creative thinking caps and show us what you can make from a 2 x 4! Be sure to bring along a thumb drive with your photos of your build, tooling, jigs, etc.

March 2016 Meeting Highlights

Newsletter Photos by Tom Howorth

Meeting Notes by Dan Cordwell

The **March 2016** meeting of the **Northwest Woodworkers Association** was held on **Thursday, March 31, 2016** at **Rockler - Northgate**. We were glad that so many of our members were able to attend and share such an interesting array of **Show 'n' Tell** projects.

We want to express our appreciation to **Casey Sheehan, Manager**, and the **Rockler - Northgate** staff for providing a wonderful venue and refreshments for this meeting. We really appreciate your long standing support of the **Association**.

Current Projects & Q'n'A

Tom Walko raised a question about the best adhesive for applying veneer. He noted that he had problems using water based adhesives and was considering using gel type contact cement. **Herb Stoops** noted that he had good success using **Titebond Cold Press for Veneer** glue.

Herb Stoops mentioned that he had gotten out his **Worksharp 3000** and dusted it off to try it out using some diamond abrasive plates recommended on one of the woodworking forums. He reported that his test results were very positive, enabling him to easily sharpen his chisels and plane irons. We hope **Herb** will bring his **Worksharp 3000** to a future meeting and demonstrate his mods to accommodate the diamond plates and the improved sharpening operations.

Tom Naylor mentioned that he has finally shut down the shop space he had been renting. He brought along some leftover hardwood veneer (from our past Veneer Giveaway) and a couple of bags of pocket screws to donate to the group.

Upcoming Events

The **April 28, 2016** meeting will be a fun one, entitled, “**Challenged By A 2 x 4!**” This is our annual “**What can you make from a 2 x 4?**” meeting. Respecting some of the constructive comments regarding past **Challenges**, in which some of the lesser experienced members felt at a disadvantage competing with our more experienced folk, we have changed the meeting guidelines this year. **This Challenge will NOT be a contest** – no rules, no judging, no prizes, no competitions. Just a fun meeting to demonstrate our creativity. Please put on your thinking caps and participate! Bring (one or more) projects made principally from a soft wood construction grade 8 ft 2 x 4. Projects can be practical, whimsical, artistic, or anywhere in between.....☺ Bring along a thumb drive with additional photos and information about your project(s), along with any special jigs or fixtures (or photos of them). *Your participation is what makes this such a fun meeting.*

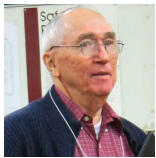
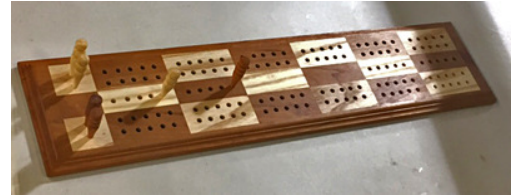
Our **May 26, 2016** meeting will be held at **Rockler-Northgate**. **Mark Martinez** will give a presentation regarding **Hand Planes, Chisels, and Their Usage**. Should be an educational meeting to help us understand these important, basic hand tools.

The **June 30, 2016** meeting will be held at **Woodcraft Supply**. **Herb Stoops** will give us an interesting and entertaining presentation about the **Design and Fabrication of Wooden Locks**. He will be showing us a wide variety of wooden lock configurations, some of which are his own custom designs! This is definitely a “don’t miss” meeting!

Program Highlight **Mega Show'n'Tell**



Bill Bond showed a nicely crafted two-color hardwood cribbage board he had made from cherry and maple. The custom molded frame added greatly to the beauty of the piece. He also turned the custom pegs on his lathe.



Charlie Culler showed the completed fishing net frame project he has been working on, including an interesting plastic net which he said is the newest innovation intended to minimize harm to the fish for catch and release fishing.



He also showed a beautiful custom designed picture frame member he had made from **Bubinga, Wenge, and Birdseye Maple**. He also brought along some hardwood coasters and the beginnings of a three dimensional scroll sawed candle holder.



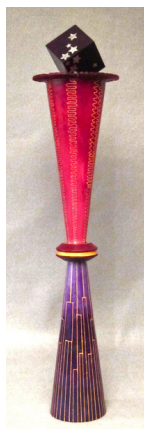
Dan Cordwell showed us a slide presentation of a beautiful custom designed stand for his new flat screen TV and electronics. He said the legs were made from quarter sawn **White Ash**, the shelves from **Baltic Birch Ply w/Walnut trim**, and the feet from **Poplar**. He also brought along a router template he had made for the curved legs for the project, noting that he had made the template from a piece of laminate flooring, which he said is great for that application because it is flat, smooth, and rigid. Interestingly, he cleverly designed the piece to be assembled with screws, so that it could be taken apart at a later date, if necessary. Great design and build, **Dan!**



Rick Tydings displayed a beautifully crafted maple box with ends which incorporated matching double dovetails to attach the ends to the side panels. The double dovetails were made with contrasting **Ebony** inserts, providing a distinctive, striking contrast. Wow, **Rick!** What a fantastic job of making small, precise dovetails in such thin materials so carefully that the pins and tails matched on all sides of both end panels. And then to add in the multiple cuts required to make the double dovetails while maintaining the parallelism and precision fitup demonstrates a patient, masterful skill. A piece to be proud of for sure, **Rick!** Thanks for bringing it along to share with us.



Chris Green showed us the latest artistic creations in his **Cone Series**. These pieces were 24” to 30” tall x 4” diameter hollow forms made principally of **Poplar** and turned on his lathe. The lovely, colorful finishes of the pieces were acrylic paints with **MinWax** gloss poly wipe-on top coat. He said that he used his air powered paint pen to produce some of the intricate patterns and lines on the pieces. **Chris** noted that his piece entitled, “**If You Go Down To the Woods**”, used a lovely figured piece of **Myrtle** wood that he had purchased many years ago. What a fantastic display of your versatile artistic talents, **Chris**. Thanks so much for sharing them with us!



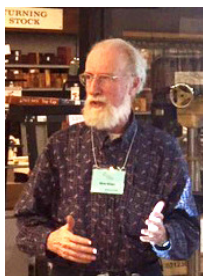
The Stars Are Out



On Pointe



Cone Flower with Pomegranate



Chris Green



A Snowball's Chance in Hell?



If You Go Down To The Woods



Getting Straight to the Point



Tom Howorth showed us a couple of interesting and practical projects. Being a wine aficionado, he accumulates a significant number of wine bottle corks, distinctive because of the winery logos on them. Guess we could call him our Happy Webmaster.....:-) He displayed some unique drink coasters made from a variety of wine bottle corks, along with photos of an interesting jig he uses on his band saw to safely cut the corks in half.



His other project was a really versatile cabinet designed to use the space available underneath his floor mounted drill press. As well as providing storage, the cabinet base also incorporates casters so that he can move his drill press to different locations in his shop. Great job on a terrific mod, **Tom!**

We were pleased to hear that **Tom Walko**, a previous **Association** member, had rejoined our group. Welcome back, **Tom!** To add to our program, **Tom** brought along a couple of interesting projects. He showed us the prototype of an angular display stand design he is currently developing for use with his wonderful wooden ship models (some of which we have seen in the past). He noted that he was trying to develop the geometry of the stand to make the most efficient use of a sheet of plywood. **[Ed. Note:** I wonder if perhaps a commercially available part nesting software program might be useful for such an application.] Hopefully, sometime at a future meeting, he will bring along one of his great model ships displayed on such a stand.



Tom also mentioned that he and his wife love to work with driftwood to make artistic pieces. He brought along a really interesting small driftwood piece in the shape of a rocking horse. Adding a curved base on the bottom of the piece, along with some brush bristles for a mane, he showed us a really neat rocking horse! What a clever idea, **Tom!**



Herb Stoops brought along a really interesting project to share – a small harp! He noted that a musician friend of his son had asked him if he could build a custom designed wooden harp for him. After discussing the project and suggesting revisions to the design to make it producible, **Herb** decided he could build the harp. The custom design of this harp is very interesting in that it was designed to be taken apart for storage in a suitcase for transporting to musical events! After many design revisions, **Herb** was able to make a lovely, working, portable harp for this person.



After building the harp, **Herb** decided that it was such an interesting, unusual project that he would make a second one to put in his own living room as a conversation piece. Along with the harp, he designed a custom pedestal stand to display the harp. He said he found a lovely piece of quilted maple in his stash that

he used for the sound box for the harp, and solid maple for the frame of the harp. When it was complete, his musician friend strung the harp for him, even tho **Herb** doesn't play the instrument. However, it surely does make a wonderfully decorative conversation piece for his living room!



Paul Stoops displayed a lovely jewelry box he had made for his wife. He noted that he had made a similar one for a cancer charity auction about a month ago that made such a big hit at the auction that it set off a bidding war for the box! Having seen the box under construction and completed, **Paul's** wife decided she wanted one like it.



So he revised the design a little to make the box larger (his wife has lots of costume jewelry!) and more decorative than the original one. The box was made from **Macacauba**, a **South/Central American** hardwood. This wood has a grain pattern similar to **Mahogany**, but is very hard, similar to **Purpleheart**. However, it works well. To enhance the beauty of the box, he made the faceted lid from a piece of highly figured **American Walnut**, resawed and bookmatched to amplify the beautiful grain pattern. In addition, the internal tray and dividers

were made from **Curly Maple**, resawed from a 2" square leg turning blank! Interestingly, the woods used for this box were purchased online from a company in Arizona, **Woodworkers Source** (<http://www.woodworkerssource.com/>).

The box was finished with a seal coat of spray shellac and multiple coats of rattle can spray lacquer. Lining the bottom of the tray and box with black adhesive velvet from **Rockler**, and the installing solid brass quadrant hinges, provided the quality finishing touches for the box. Needless to say, **Paul** noted that the box was a big hit with his wife!



Note from the Editor



It was great to see the number of members at the meeting who brought along such a wide variety of **Show'n'Tell** projects. Thanks to each of you for participating and making this meeting such an entertaining and educational event. I find that somehow I learn something new at each meeting! What about you? That is one of the wonderful benefits of our **Association** – sharing our woodworking knowledge and skills with each other. It never ceases to amaze me how much talent, knowledge, skill, and woodworking experience is resident within our membership, as evidenced by the thoughtful comments, helpful and courteous answers to questions, and creativity demonstrated by the array of woodworking projects we are privileged to see at the meetings. Seeing these wonderful creations in the little photos in the **Newsletter** is not like seeing the real thing in person! I wish more members would join us for the meetings to share in the wealth!

A special thanks to **Dan Cordwell** for helping us out by taking the notes for this meeting in the absence of our Secretary **Jan Erickson**, and to **Tom Howorth** for taking the meeting photos. Good job, guys! We really appreciate you stepping up to the plate for us!

Happy and Safe Woodworking,

Paul

Northwest Woodworkers Association Sponsors

We appreciate the generous support provided by our NWWA sponsors, from providing member discounts on purchased items to providing state of the art venues for us to conduct our monthly meetings. Thank you, Sponsors!

Blackstock Lumber
1039 Elliot Ave. W.
Seattle, WA 98119
10% Contractor Discount

Craftsman Studio
2815 Baker St. Suite 205
Everett, WA 98275
10% Online with entered code

Crosscut Hardwoods
4100 – 1st Avenue South
Seattle, WA 98134
10% Discount with Membership Card

Edensaw Woods
925 East 25th Street
Tacoma, WA 98421-2323

IsGood Woodworks
4660 E. Marginal Way S., Suite 7
Seattle, WA 98134
10% Member Discount on Selected Services

Midway Plywood
14004 Highway 99
Lynnwood, WA 98087
10% Discount with Membership Card

Rockler Woodworking and Hardware-Northgate
832 NE Northgate Way
Seattle, WA 98125
10% Member Discount (except sale items and power tools)

Rockler Woodworking and Hardware-Tukwila
345 Tukwila Parkway
Seattle, WA 98188
10% Member Discount (except sale items and power tools)

Woodcraft Supply
5963 Corson S.
Seattle, WA 98108
10% Member Discount (except sale items and power tools, and workbenches)

Northwest Woodworkers Association Contacts

Membership—Allen McCall
Treasurer—Chris Green
Secretary—Jan Erickson
Raffle— Herb Stoops
Webmaster--- Tom Howorth thoworth@gmail.com
Newsletter Editor--- Paul Stoops pmstoops@comcast.net 253-804-3209
Photographer— Scott Wilson

Steering Committee

Bill Bond williamcbond@comcast.net
Chris Green chrisandrenegreen@gmail.com
Mark Martinez mark76wa@comcast.net
Herb Stoops hcstoops@comcast.net
Paul Stoops pmstoops@comcast.net

We encourage our members to contact any of the above individuals with questions, comments, or items that may be of interest to the membership.

In addition, please visit our website and forum: <http://www.nwoodworkers.org>